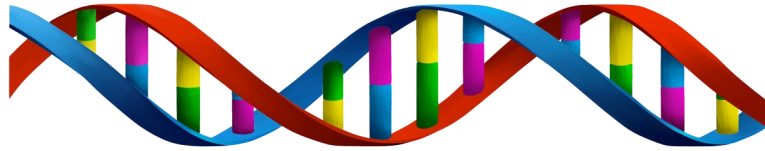


Family Links



Parent to Parent

Inform | Support | Connect

Newsletter Made from Parents to Parents with Children with Disabilities

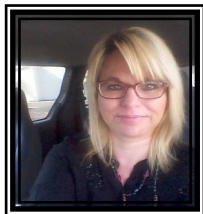
Summer 2020

Show Your Art Showcase

Parent to Parent gave out 30 water color kits to families on May 8th and 7 families joined virtually on a ZOOM call, a week later, to show everyone their work. Some painted during the meeting! We have a creative bunch in our group and we thought you would like to see their artwork too. We will be doing another "Show your Art" Father's Day themed pick up packet on June 12th. Check out the WWVDN website to register: www.wwvdn.org



Letter from the Parent to Parent Coordinators:



Dear Families,

I know this has been quite a trying time for all. I do hope you are all hanging in there and taking advantage of our Zoom meetings and other events that have taken place. It is not the same as seeing you and hugging you in person but I am sending virtual hugs to each of you.



Ysabel and I are available to meet with you one on one via Zoom, or by using the 6 feet social distancing rule in person anytime. Call us to make arrangements.

Please call or email us if you are in need of a listening ear, a helping parent or some help with resources. Angie can be reached at (509) 540-9880 or p2p@wvvdn.org, Ysabel can be reached at (509)301-0679 or p2pespanol@wvvdn.org

Family Drive In Night!

Tuesday June 30th, 2020

Donations accepted



Please see website at wvvdn.org for more information. Gift bags available to first 40 cars. A poll will be sent out to pick the movie! The movie with the most votes will be played that night. It looks like it might be a double feature! Gates open at 8:00 p.m.



If you or someone you know is at risk of harming themselves or others, please call or text the Crisis Hotline.

Text the word HOME to 741741
or call 1-800-572-8122.



The **census** helps shape many different aspects of our community. Everyone is counted. For the first time, you can choose to respond online, by phone, or by mail.

Respond today. Shape Your Future. Guides for 59 Languages. Download A Sample Form. Vital for Your Community. Complete the **Census** Today. Your Response Is Required. Your Response Matters.

Your Privacy Matters.

www.2020census.gov

If you need Help you can contact Angie or Ysabel.

Parent to Parent and WWVDN are successful because of the volunteers that help us with our programs. WWVDN and Parent to Parent have three part time staff and an Executive Director. Parent to Parent provides 4 to 8 support meetings and events each month. Our volunteers give countless hours to help with these meetings and events. As a staff, we cannot thank you enough for all of your help and support that you give Parent to Parent. As we are not able to hold an official Volunteer Appreciation Dessert we would like to take this time to give a shout out to those volunteers who supported us this past year.

First, thank you to the WWVDN board who has given countless hours of support towards our programs and have helped at the Winter Ball and other events that have taken place.

President: Amy Harris

Vice President: Alisha Walker

Treasurer: Josh Reyes

Secretary: Heather Bayne

Directors: Angela Beam

Shannon Bergevin

Daven Harshman

Maria Luisa Jimenez

Carla Nibler

Mike Spiess

Tyler Zimmerman

Autism Support Meeting Volunteers are **Candace Nelson** and **Carla Nibler**. Also, a big Thank You to the **Walla Walla Elks Chapter** and **Diana Bieker**, for paying for the Autism Panel that was held in October. They provided Kinetic Sand kits, bite necklaces, Autism necklaces and other fun sensory friendly toys for our program.



Contact us or your local policy makers!

WWVDN, c/o Parent to Parent

PO Box 1918

Walla Walla, WA 99362

Cyndy Knight

admin@wwvdn.org

Angie Witt

p2p@wwvdn.org

Ysabel Fuentes

p2pespanol@wwvdn.org

www.wwvdn.org

Support & Information to Parents with children with disabilities and special health care needs.



Legislators and Senator:

Skyler Rude, Legislator 17 District

by email: skyler.rude@leg.wa.gov,

by phone (360) 786-7828

Bill Jenkins, Legislator 16th District

by email: bill.jenkins@leg.wa.gov,

by phone (360) 786-7836

Maureen Walsh, Senator 16th District

by email: maureenwalsh.src.wastateleg.org

by phone (360) 786-7630



Thank you....

Other volunteers to recognize:

Lawson Knight, speaker, emcee and hauler of all things extraordinaire, **Jess Boyers**, Whitman student and Intern for WWVDN, **Laura Reiter**, Summer Camp Director, **Becky Gibson and Jeanne Walter**, Columbia County volunteers who held craft and cooking classes in Columbia County, **Glenda Rode**, who stays behind to help clean up after events, **Patrick McFetridge**, Basketball coach, **Amy Harris and Rick Clark**,

basketball and softball coaches, **Mike Spiess**, baseball coach and to our **fabulous peer mentors** who show up to events to watch kiddos and help with sporting events.

We Thank You from the bottom of our hearts.



If you are interested in volunteering for events and meetings, please contact **Cyndy Knight**, WWVDN Executive Director or **Angie Witt**, **Ysabel Fuentes**, Parent to Parent Coordinators.